

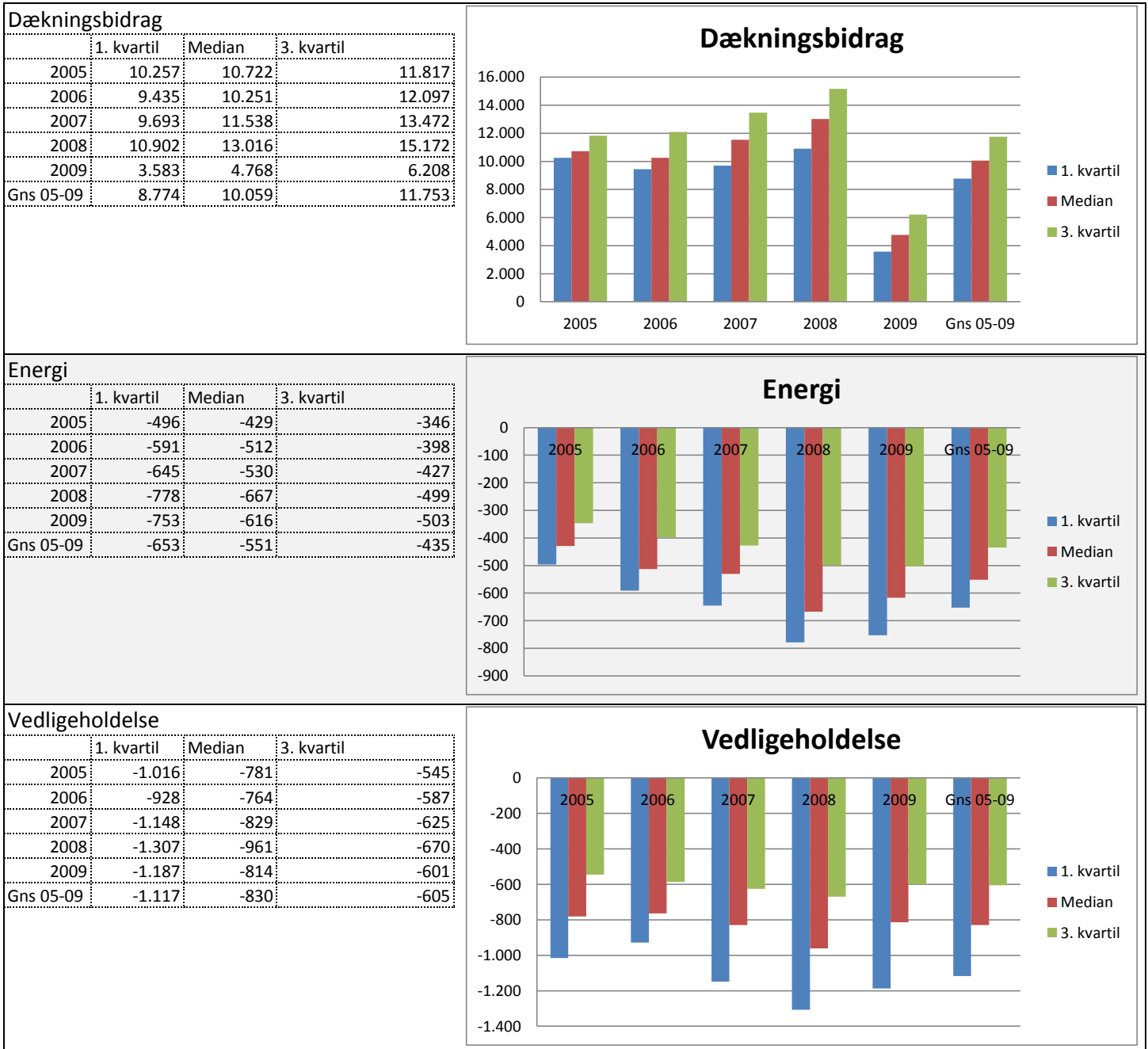
Analyse af Business Check Kvæg for 2005 til 2009

Der indgår i alt 335 regnskaber fordelt på de 5 år

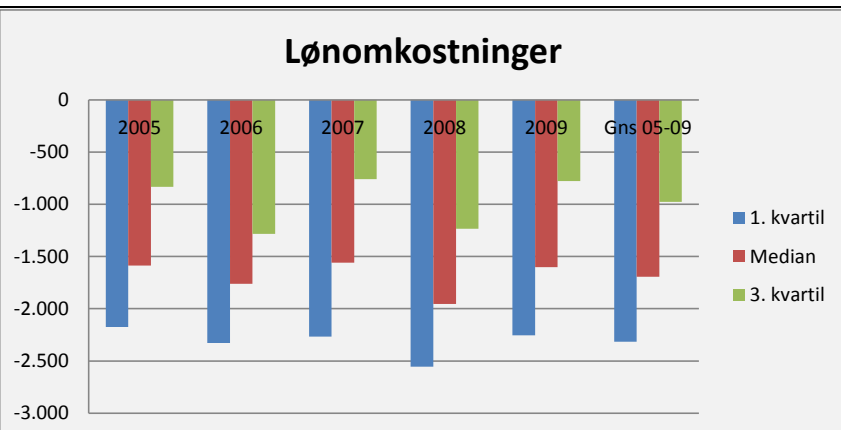
Alle bedrifter er med konventionel produktion

Stor race, Jersey, malkestald, karusel og AMS - alt er med

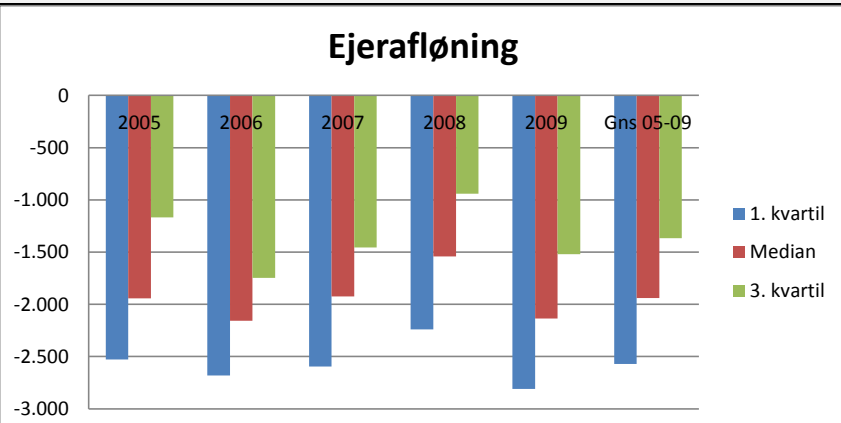
Det Europæiske Fællesskab ved Den Europæiske Fond for Udvikling af Landdistrikter og Ministeriet for Fødevarer, Landbrug og Fiskeri har deltaget i finansieringen af projektet



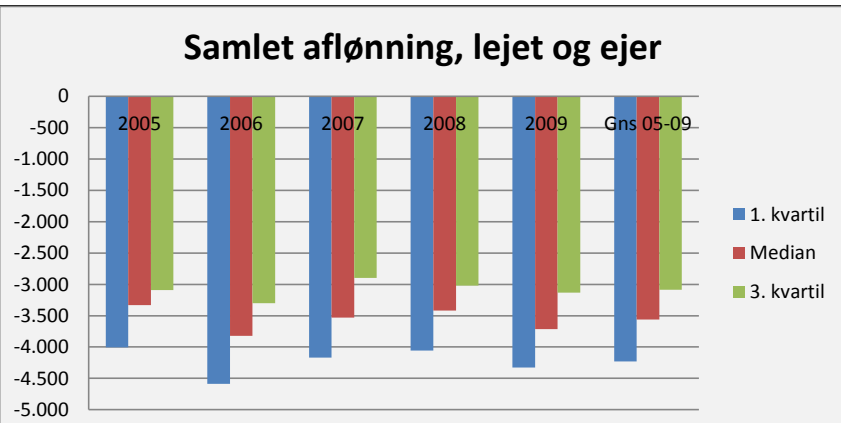
Lønnomkostninger			
	1. kvartil	Median	3. kvartil
2005	-2.174	-1.587	-834
2006	-2.328	-1.761	-1.283
2007	-2.267	-1.558	-759
2008	-2.553	-1.954	-1.235
2009	-2.256	-1.603	-779
Gns 05-09	-2.316	-1.693	-978



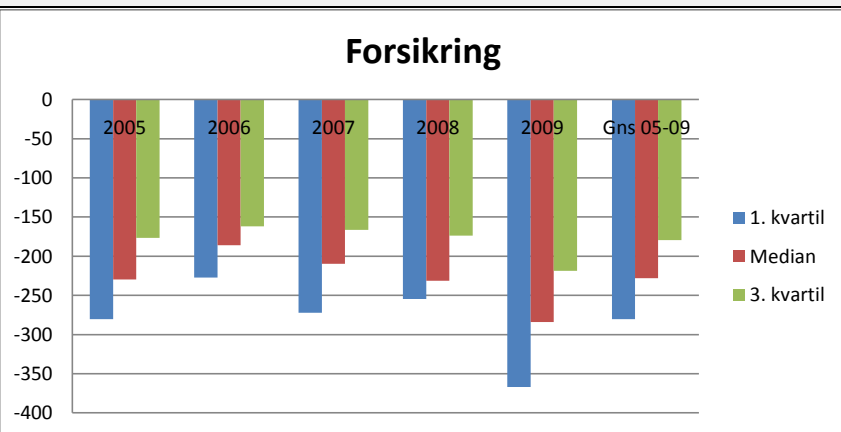
Ejer aflønning			
	1. kvartil	Median	3. kvartil
2005	-2.528	-1.942	-1.168
2006	-2.680	-2.158	-1.747
2007	-2.595	-1.924	-1.456
2008	-2.240	-1.540	-942
2009	-2.811	-2.134	-1.520
Gns 05-09	-2.571	-1.940	-1.367



Samlet aflønning, lejet og ejer			
	1. kvartil	Median	3. kvartil
2005	-4.007	-3.333	-3.092
2006	-4.587	-3.820	-3.300
2007	-4.170	-3.529	-2.899
2008	-4.059	-3.417	-3.019
2009	-4.325	-3.712	-3.130
Gns 05-09	-4.229	-3.562	-3.088



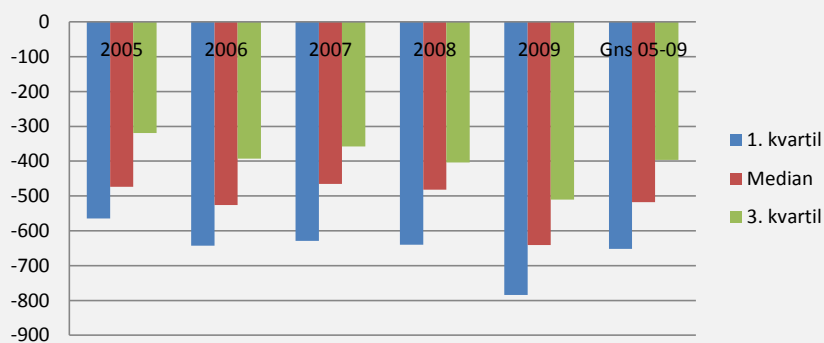
Forsikring			
	1. kvartil	Median	3. kvartil
2005	-280	-230	-176
2006	-227	-186	-162
2007	-272	-210	-166
2008	-254	-231	-174
2009	-367	-284	-218
Gns 05-09	-280	-228	-179



Diverse kap. omkostninger

	1. kvartil	Median	3. kvartil
2005	-565	-474	-319
2006	-643	-526	-393
2007	-629	-465	-358
2008	-640	-482	-404
2009	-784	-641	-510
Gns 05-09	-652	-518	-397

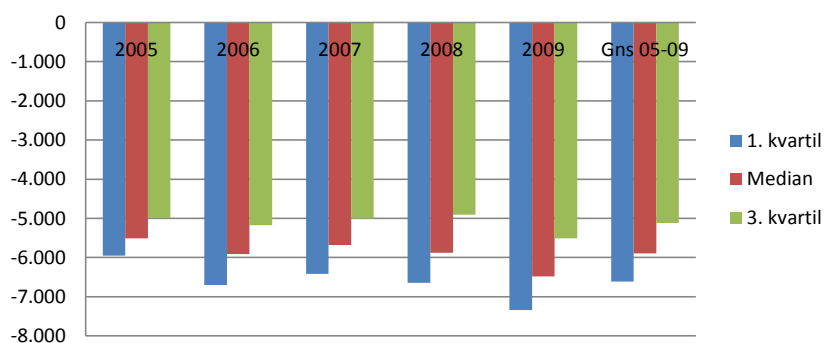
Diverse kap. omkostninger



Kapacitetsomkostninger i alt

	1. kvartil	Median	3. kvartil
2005	-5.948	-5.513	-4.990
2006	-6.702	-5.909	-5.174
2007	-6.418	-5.684	-5.005
2008	-6.648	-5.877	-4.909
2009	-7.336	-6.484	-5.509
Gns 05-09	-6.611	-5.893	-5.117

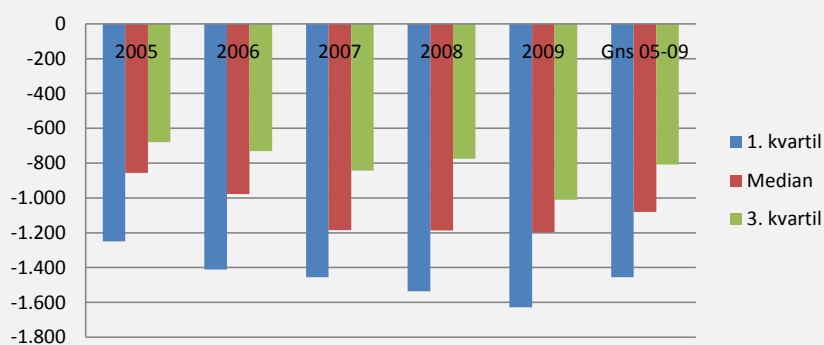
Kapacitetsomkostninger i alt



Afskrivninger bygninger

	1. kvartil	Median	3. kvartil
2005	-1.249	-855	-679
2006	-1.411	-977	-731
2007	-1.455	-1.185	-843
2008	-1.537	-1.188	-775
2009	-1.628	-1.197	-1.010
Gns 05-09	-1.456	-1.080	-808

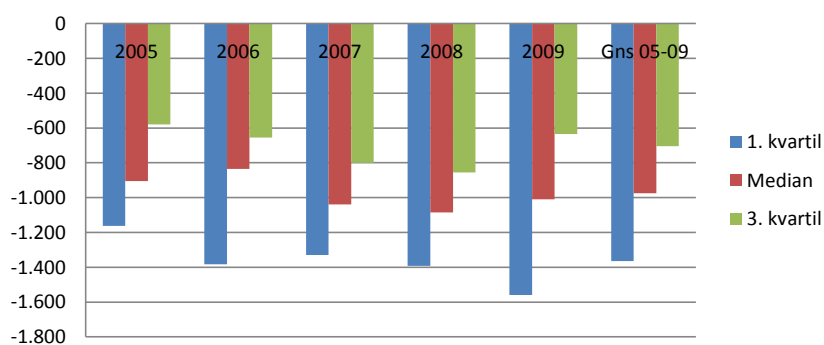
Afskrivninger bygninger



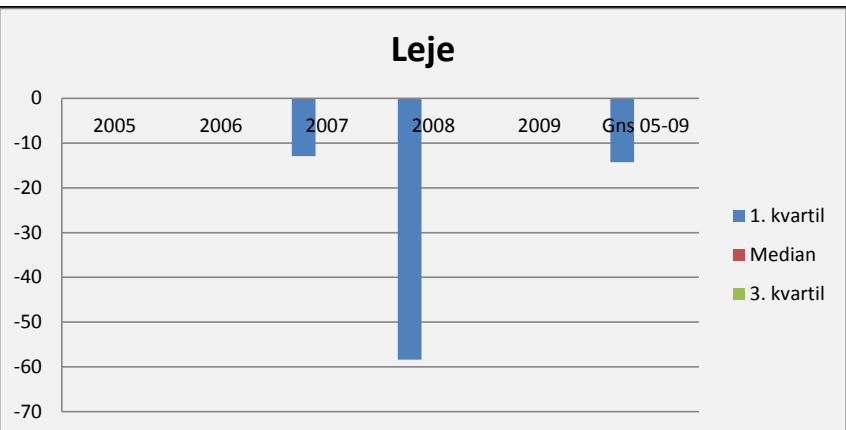
Afskrivninger inventar

	1. kvartil	Median	3. kvartil
2005	-1.162	-905	-580
2006	-1.382	-834	-655
2007	-1.330	-1.040	-800
2008	-1.392	-1.084	-856
2009	-1.559	-1.010	-635
Gns 05-09	-1.365	-975	-705

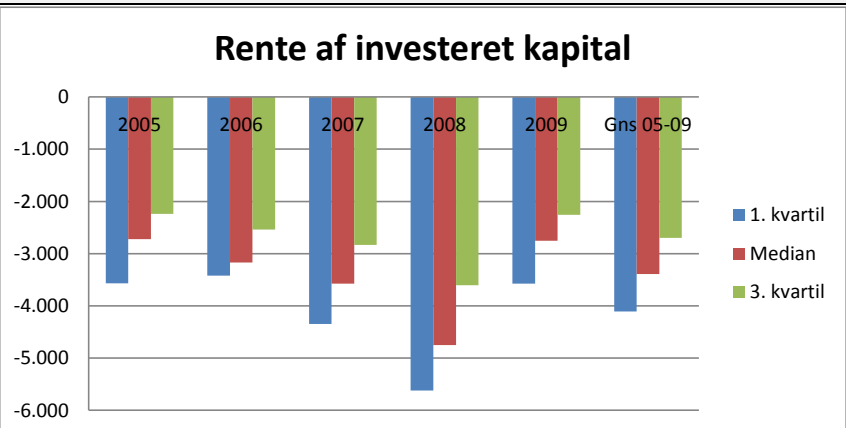
Afskrivninger inventar



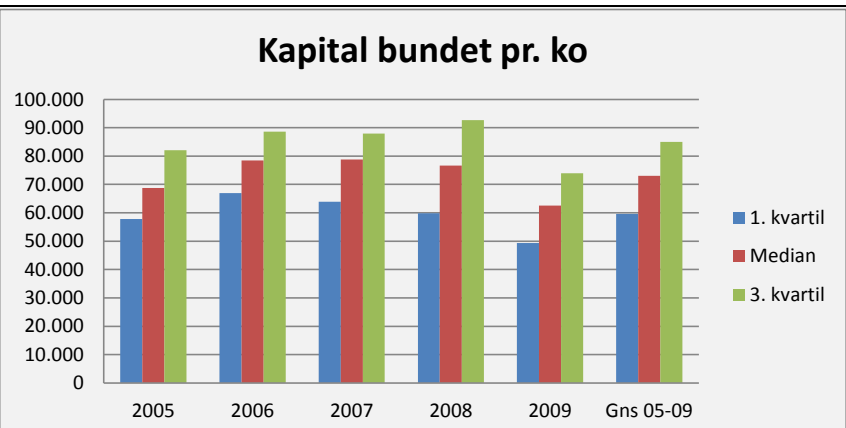
Leje			
	1. kvartil	Median	3. kvartil
2005	0	0	0
2006	0	0	0
2007	-13	0	0
2008	-58	0	0
2009	0	0	0
Gns 05-09	-14	0	0



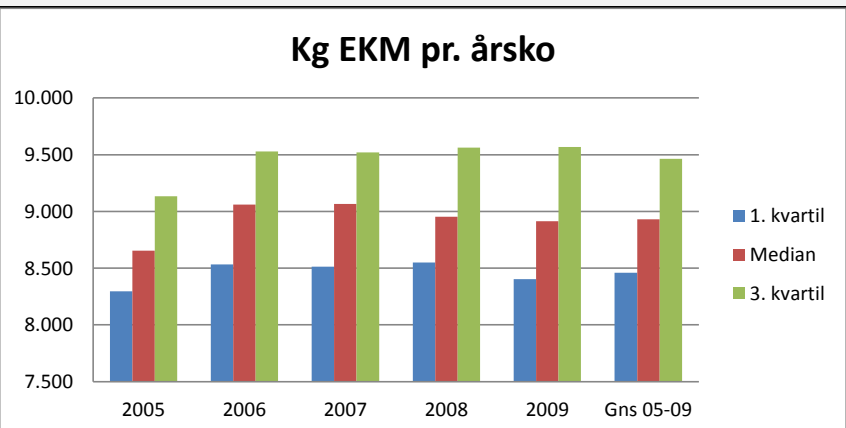
Rente af investeret kapital			
	1. kvartil	Median	3. kvartil
2005	-3.567	-2.721	-2.238
2006	-3.422	-3.169	-2.540
2007	-4.345	-3.571	-2.834
2008	-5.617	-4.750	-3.607
2009	-3.574	-2.753	-2.255
Gns 05-09	-4.105	-3.393	-2.695



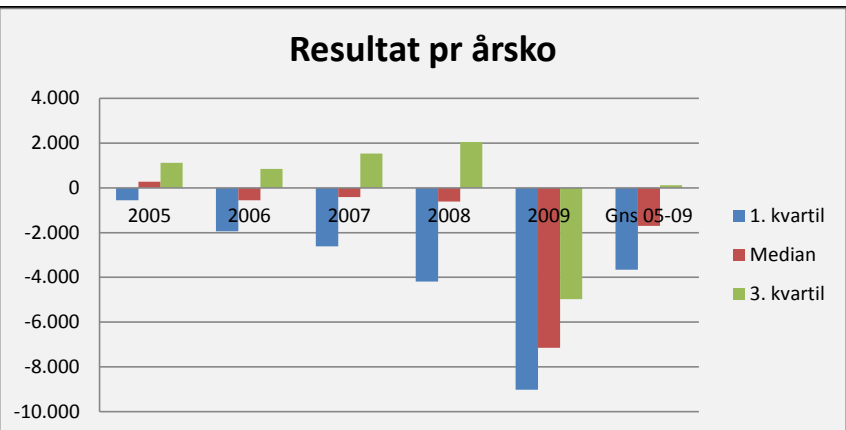
Kapital bundet pr. ko			
	1. kvartil	Median	3. kvartil
2005	57.786	68.789	82.098
2006	66.975	78.414	88.592
2007	63.896	78.818	87.993
2008	59.854	76.615	92.629
2009	49.315	62.531	73.970
Gns 05-09	59.565	73.033	85.056



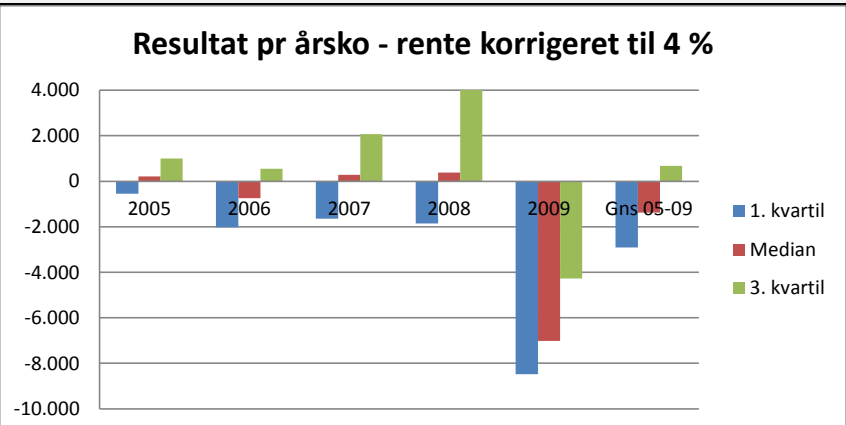
Kg EKM pr. årsko			
	1. kvartil	Median	3. kvartil
2005	8.297	8.654	9.135
2006	8.533	9.060	9.529
2007	8.514	9.067	9.521
2008	8.551	8.954	9.564
2009	8.404	8.915	9.567
Gns 05-09	8.460	8.930	9.463



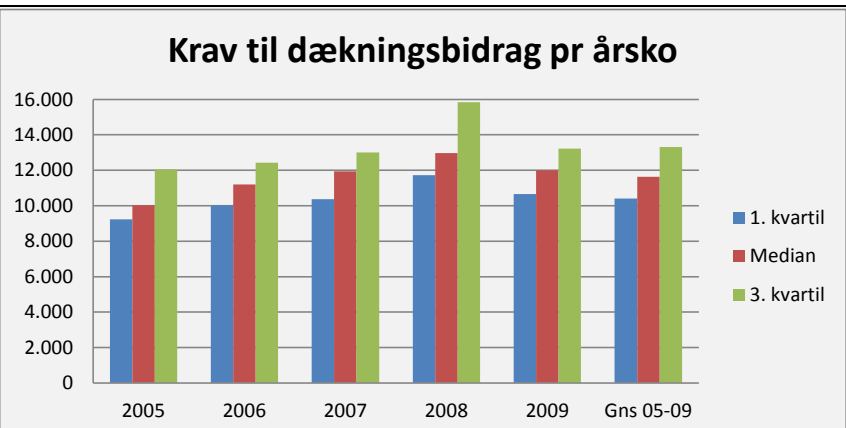
Resultat pr årsko			
	1. kvartil	Median	3. kvartil
2005	-553	269	1.119
2006	-1.945	-554	848
2007	-2.618	-417	1.532
2008	-4.192	-613	2.052
2009	-9.015	-7.150	-4.973
Gns 05-09	-3.664	-1.693	116



Resultat pr årsko - rente korrigeret til 4 %			
	1. kvartil	Median	3. kvartil
2005	-544	207	1.004
2006	-2.019	-747	554
2007	-1.645	283	2.062
2008	-1.853	386	4.026
2009	-8.478	-7.012	-4.271
Gns 05-09	-2.908	-1.376	675



Krav til dækningsbidrag pr årsko			
	1. kvartil	Median	3. kvartil
2005	9.227	10.034	12.052
2006	10.023	11.208	12.426
2007	10.375	11.947	13.006
2008	11.725	12.961	15.844
2009	10.650	11.995	13.221
Gns 05-09	10.400	11.629	13.310



Krav til DB pr årsko - rente korrigeret til 4 %			
	1. kvartil	Median	3. kvartil
2005	9.080	10.194	11.782
2006	10.115	11.576	12.516
2007	9.988	11.427	12.618
2008	10.363	11.330	13.057
2009	10.176	11.714	12.852
Gns 05-09	9.944	11.248	12.565

